



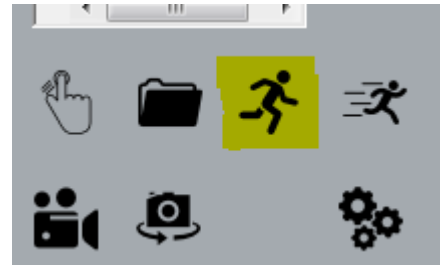
## Product Manager

The purpose of this functionality is to offer a simple method to integrate bVision recipes integrated with the operator information.

By using this manager you can run chained recipes, save to excel files, and much more.

### Create a Product:

1. Click on this icon to open the manager



2. The following screen will be opened

Select Product

Double Click to select Product ID

#	Product
0	Test
1	hellow
2	run
3	fff
4	SSS
5	7755884
6	rrr5
7	mordi
8	777776
9	7776899
10	777854523
11	7736358
12	77724624

Selected Product: 7755884

Product Information

Set Up

Operator: -1

Lot: 2525

Measurement Count: 24

Catalog number: \_\_\_\_\_

comments: \_\_\_\_\_

Product

SPC

Save Images

Link to recipe: BROSSH\DEMO1

# BROSSH

Inspection Systems Ltd.



Phone: +972-4-9588185  
Fax: +972-4-9588186  
Cell Phone: +972-54-4809938  
Email: [info@brossh.com](mailto:info@brossh.com) [www.brossh.com](http://www.brossh.com)

2 Haoreg St.  
P.O.B 1279  
karmiel 21651  
Israel

## Product ID:

Here you see the list of your products.

You will need to select the product before you can run/edit/delete it.

Double Click to select Product ID

#	Product
0	Test
1	hellow
2	run
3	fff
4	SSS
5	7755884
6	rrr5
7	mordi
8	777776
9	7776899
10	777854523
11	7736358
12	77724624

## Selected Product:

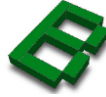
The selected product will appear here.

Selected Product

You can also type the first charters for quick search

# BROSSH

Inspection Systems Ltd.



Phone: +972-4-9588185  
Fax: +972-4-9588186  
Cell Phone: +972-54-4809938  
Email: [info@brossh.com](mailto:info@brossh.com) [www.brossh.com](http://www.brossh.com)

2 Haoreg St.  
P.O.B 1279  
karmiel 21651  
Israel

Selected Product: 77  
7755884  
777776  
7776899  
Product Information: 777854523  
7736358  
Set Up: 77724624  
Operator

## Product Information:

The operator needs to fill in the relevant details so they will appear in the excel files.

The measurements counter automatically increases every run, you can reset it by entering any number in the text box.

Product Information

Set Up

Operator: Mordi

Lot: 345

Measurement Count: 0

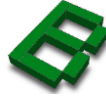
Catalog number: RERIH-434

comments:

## Setup:

Click to modify this information tab. You can enter any text and control what values the operator must enter (if not, the test won't start).

Leave the text box blank to hide the line.



Phone: +972-4-9588185  
Fax: +972-4-9588186  
Cell Phone: +972-54-4809938  
Email: [info@brossh.com](mailto:info@brossh.com) [www.brossh.com](http://www.brossh.com)

2 Haoreg St.  
P.O.B 1279  
karmiel 21651  
Israel

	Subject	Must
F1	<input type="text" value="Operator"/>	<input checked="" type="checkbox"/>
F2	<input type="text" value="Lot"/>	<input type="checkbox"/>
F4	<input type="text" value="Catalog number"/>	<input type="checkbox"/>
F5	<input type="text" value="comments"/>	<input type="checkbox"/>
F6	<input type="text"/>	<input type="checkbox"/>

\* To delete subject leave subject empty  
\* If Must is check, operator will be forced to fill it

## New Product:

Create new product and add it to the product list:

1. Click on the "New" icon to load this dialog

Link to recipe

Product Catalog Number:

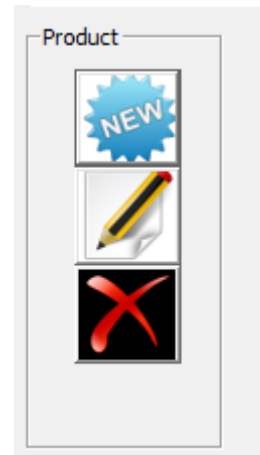
Link this Product to Recipe:

#	xx	m

Repeat Measurement

Excel Result File

Sheet	Start Col	Start Row
1	A	3

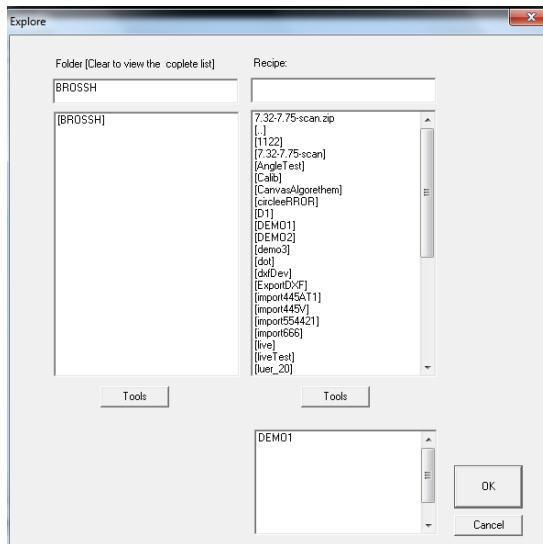


2. In the "Product Catalog number" enter the product number (the name of the product/serial number etc.)
3. Click on the right (..) button to link this product to recipe, the explorer window will be opened. We select "Demo1" for example:

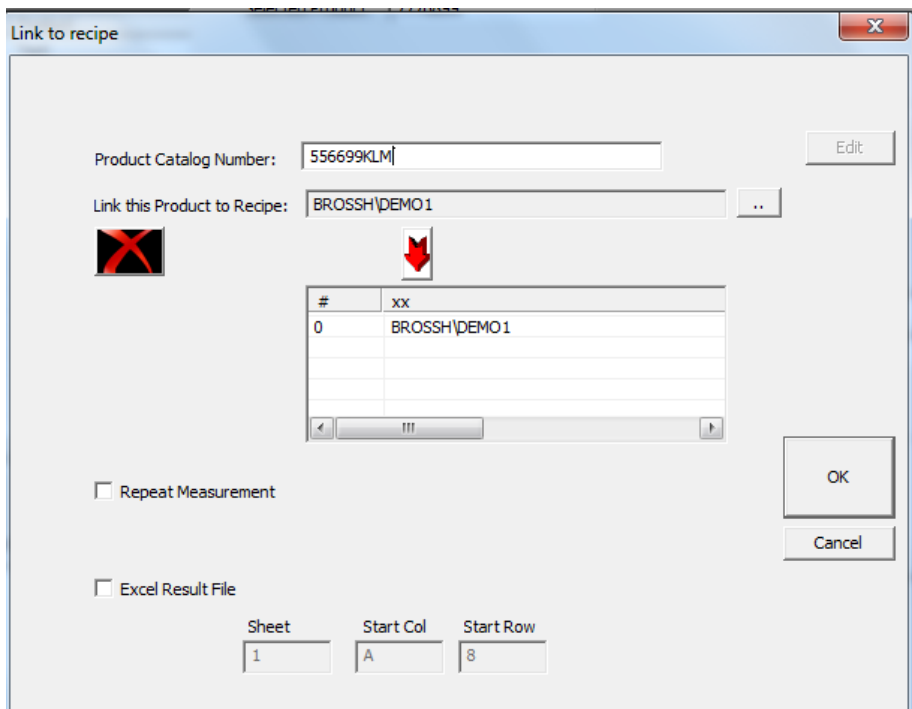


Phone: +972-4-9588185  
Fax: +972-4-9588186  
Cell Phone: +972-54-4809938  
Email: [info@brossh.com](mailto:info@brossh.com) [www.brossh.com](http://www.brossh.com)

2 Haoreg St.  
P.O.B 1279  
karmiel 21651  
Israel



#### 4. This is the final result:



# BROSSH

Inspection Systems Ltd.



Phone: +972-4-9588185

Fax: +972-4-9588186

Cell Phone: +972-54-4809938

Email: [info@brossh.com](mailto:info@brossh.com) [www.brossh.com](http://www.brossh.com)

2 Haoreg St.

P.O.B 1279

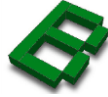
karmiel 21651

Israel

- 
- Check **Repeated measurement** for endless loop mode (Automatic machine) – not for tcpip communication
  - Check **Excel result file** for \*.docx files support (csv file is always created )
  - If you need to link another recipe (Chain mode), repeat stage 3.  
For example: one master recipe for motions and the other is unique for measurements

# BROSSH

Inspection Systems Ltd.



Phone: +972-4-9588185  
Fax: +972-4-9588186  
Cell Phone: +972-54-4809938  
Email: [info@brossh.com](mailto:info@brossh.com) [www.brossh.com](http://www.brossh.com)

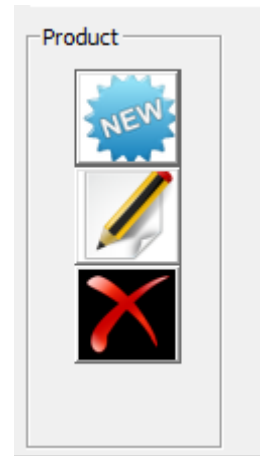
2 Haoreg St.  
P.O.B 1279  
karmiel 21651  
Israel

## Edit Product:

Select product from the list and click the pencil for editing.

## Delete Product:

Select product from the list and click the red X for deleting.

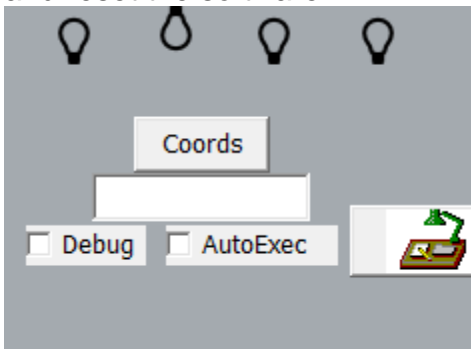


## Excel Support (SPC):

Each time you will run a product from the product manager, a new line will be added to the excel file.

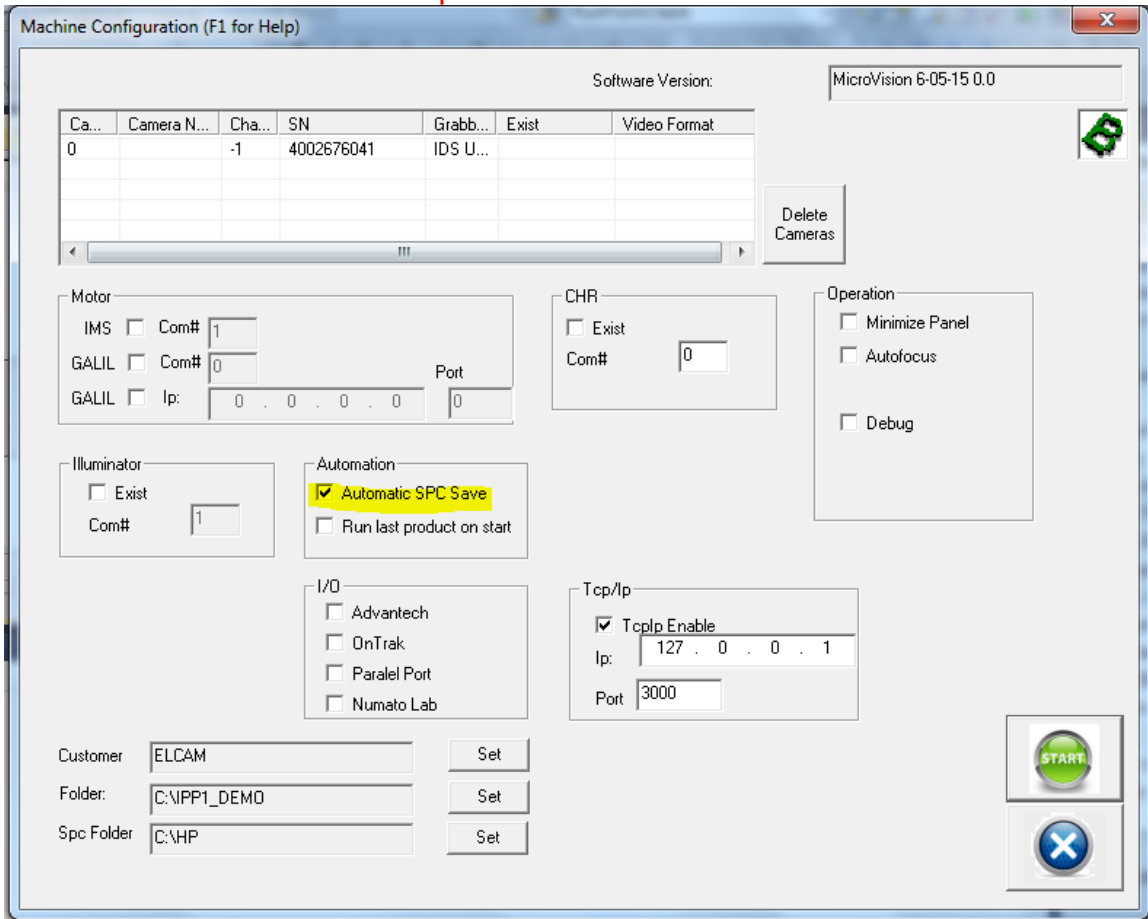
## Automatic Save:

1. Uncheck the Autoexec options so you see the machine configuration dialog and reset the software.





## 2. Make sure that "Automatic spc save" is checked



- For the first run, a new file will be in the SPC folder, in this example the name of the SPC folder is "C:/HP" + the name of the product "C:\HP\7755884"
- Each new file is generated with header that contain the tolerances, if you delete the file, a new file will be generated
- Make sure to work with SPC only after you create a perfect recipe program.



# BROSSH

Inspection Systems Ltd.



Phone: +972-4-9588185  
Fax: +972-4-9588186  
Cell Phone: +972-54-4809938  
Email: info@brossh.com [www.brossh.com](http://www.brossh.com)

2 Haoreg St.  
P.O.B 1279  
karmiel 21651  
Israel

## Manual Save:

1. Same as in automatic mode, you will need to go to the machine configuration dialog but this time uncheck the "Automatic SPC save"
2. now in each run the summarize result dialog will look like this:



3. click on "SPC" button to add the result to SPC file
4. Click on the red X to ignore this measurement cycle (result will not be saved)
5. Notice that the product result counter is now visible

## SPC file for example:

Measurement Operator	Lot#	S/N	Test Comment	Date	Recipe	Product	Soft. Vers.							
23 Mordi	77724624	33KT	R&D	14 06 2015 14:56:58	BROSSHDEMO1	7755884	MicroVision 6-05-15 0.0	0.75	85.016	20	6.9	FAIL		
24 Mordi	77724624	3663	R&D	14 06 2015 16:27:40	BROSSHDEMO1	7755884	MicroVision 6-05-15 0.0	0.75	89.16	35	5.6	PASS		

## **Important!**

The SPC is saving data only when running the recipe through the Product Manager!